



Supported by



Annual Report
Featuring KDDC Sponsors
See inside

KDDC 2022 Summary

By H.H. Barlow

This is my fourth annual summary at KDDC, and absolutely my favorite. 2022 has been a very good year. Kentucky dairymen have experienced the highest milk prices in history, peaking in June at \$28/CWT. This was over \$7/CWT higher than the 2021 average price. Of course, the high milk prices were tempered by the highest input cost in memory. Feed cost, fertilizer, fuel, labor, and utilities were all extremely high. Inflation of everything we purchased puts a hardship on all the farmers. Despite the high cost of inputs, most dairymen would agree that overall 2022 was a really good year, especially when compared to the last five years.

KDDC activities have been so much more active and pronounced in 2022, partly because the lockdowns of COVID stopped. After the terrible tornadoes of December 2021, KDDC created a relief fund for dairymen who sustained severe damage.

KDDC was able to deliver over \$105,000 to twenty-three dairies, who received major damage.

The annual Kentucky Dairy Partner Meeting hosted by KDDC, held in partnership with the Kentucky Department of Agriculture, the Dairy Alliance, and the University of Kentucky, was held in February in Bowling Green, Kentucky with over 240 attendants. The highlight was recognition of five herds with over 30,000 lbs. yearly herd average and another thirteen herds over 27,000 lbs. yearly herd average.

According to Progressive Dairy's National Dairy statistics Kentucky was announced again as the number one state in the nation over the past five years in increased milk production per cow. At the Dairy Partner Meeting, speakers from out of state gave testimonials of their experiences in using the MILK 4.0 programs, which KDDC is promoting for our states dairy farms. The four programs of 1. Genetics, 2. Improved milk quality, 3. Improved reproductive efficiency, and 4. Financial records have proven very beneficial to our producers.



Cont'd on pg. 2

2022 KDDC Board of Directors & Staff

Executive Committee

President: Freeman Brundige
Vice President: Charles Townsend, DVM
Sec./Treasurer: Tom Hastings
EC Member: Greg Goode
EC Past President: Richard Sparrow

Board of Directors

District 1: Freeman Brundige 731.446.6248
District 2: Thomas Sumner 270.991.1915
District 3: Keith Long 270.670.1388
District 4: Bill Crist Jr. 270.590.3185
District 5: Tony Compton 270.378.0525
District 6: Jerry Gentry 606.875.2526
District 7: Greg Goode 606.303.2150
District 8: Matt Collins 859.314.7132
District 9: Steve Weaver 270.475.3154
District 10: Terry Rowlette 502.376.2292
District 11: John Riney 859.805.1369
District 12: Jesse Ramar 270.277.7107
Equipment: Tony Cowherd 270.469.0398
Milk Haulers: Mike Owen 270.392.1902
Genetics: Dan Johnson 502.905.8221
Feed: Tom Hastings 270.748.9652
Nutrition: Elizabeth Lunsford Alltech 859.553.0072
Dairy Co-op: Stephen Broyles 859.421.9801
Veterinary: Dr. Charles Townsend 270.726.4041
Finance: Todd Lockett 270.590.9375
Heifer Raiser: Bill Mattingly 270.699.1701
Former Pres.: Richard Sparrow 502.370.6730

Employee & Consultants

Executive Director: H.H. Barlow
859.516.1129
kddc@kydairy.org

DC-Southeast: Beth Cox
PO Box 144, Mannsville, KY 42758
bethcoxkddc@gmail.com
859.516.1619 • 270-469-4278

DC-Central: Tori Embry
tembry@kydairy.org
859.516.1966

DC-Western: Dave Roberts
1334 Carrville Road, Hampton, KY 42047
roberts@kydairy.org
859.516.1409

DC-Northeast: Jennifer Hickerson
PO Box 293, Flemingsburg, KY 41041
j.hickersonkddc@gmail.com
859.516.2458

KDDC

176 Pasadena Drive • Lexington, KY 40503
www.kydairy.org

Kentucky Milk Matters produced by Carey Brown



We had thirty-eight producers awarded \$2,631 each for meeting the somatic cell count improvement threshold. Nineteen producers were awarded \$5,263 each for meeting the pregnancy rate improvement threshold.

KDDC started a Beef on Dairy initiative in 2021. Some of the money allocated for our MILK 4.0 program in 2021 was not used and KDDC proposed an amendment to the Kentucky AG Development Grant. The ADB approved the amendment in June 2022, creating a Beef on Dairy semen cost share and bull cost share. The semen and the bulls all had to meet established genomic parameters to be eligible for the cost share. This new program has created great interest among producers and is a welcome addition to KDDC programs.

KDDC sponsored a summer program in July to three outstanding performance farms in central Kentucky. The Goode, Hutchinson, and Compton families graciously opened their farms for tour. We were also able to visit Tarter Gate Manufacturing Facility in Liberty, and the highlight of the tour was seeing the Prairie Farms' milk processing plant in Somerset. The dairy industry is a teamwork effort and bringing processors and producers together face to face is a worthy endeavor.

KDDC staff works diligently at the state fair dairy shows and plays an integral role in the youth cheese auction, which awards 4H and FFA young dairy showmen. This past year, the cheese auction made over \$22,000.

Most Kentucky dairy farms suffered significantly in the summer dry weather that really curtailed corn and dry hay yields. This is a concern for our milking herds.

In October we had our fall tour to the World Dairy Expo in Madison, Wisconsin. The bus load of producers and students experienced educational opportunities that are not possible in our home state. The farms we visited in central Illinois were very diverse and gave a broad picture of several different types of dairy production, proving there are many ways to become successful in dairy farming.

KDDC is thankful to be one of three entities administering the Small Business Dairy Initiative grants. The University of Tennessee is the principal and KDDC and North Carolina State are the major co-partners in this program. Our own consultant, Jennifer Hickerson, is one of three coordinators for the entire southeast initiative. These grants are available to help any of our producers who desire to enter into value added projects on their farm.

KDDC consultants work everyday with our dairy farmers. The main requirement of our consultant program is to meet every dairy farmer on their farm at least once annually. This personal interaction has been a major

Cont'd on pg. 4

SALES & SERVICE FOR YOUR FARM & DAIRY NEEDS

COMPLETE DAIRY SYSTEMS SALES AND SERVICE

ANIMAL HEALTH SUPPLIES

COMMERCIAL REFRIGERATION SERVICES



Trenton Farm Supply

2470 Cemetary Road • Trenton, KY 42286

“Sales and service for your farm & dairy needs”

tfs@tbyfax.com

270-466-3180

Cont'd from pg. 2

contributor to the success of our state's dairymen. The proof of this is the naming of Kentucky as the number one improved production state in the US.

National dairy policy has been a part of KDDC efforts throughout 2022. The 2023 farm bill is upon us and some changes must be made to improve dairy sustainability. KDDC personnel attended two national meetings regarding this important topic- one in Chicago in July and another in Kansas City in October. Through the participation and involvement at these meetings, KDDC has been recognized as an important resource in developing future national dairy policy.

One last major accomplishment for KDDC, is the commitment by POSO Creek Dairy of California to build a 5,000-cow dairy in Fulton County, Kentucky. This 50 million dollar project will be a huge addition to our state's dairy industry. This project has been a year long extensive endeavor that took a lot of my time and resources. KDDC's goal is to see growth in our state's industry and this new dairy is a major piece in that expansion. Also, in this growth endeavor we are working eagerly with our existing dairies to expand as well. We believe this growth can make Kentucky the new leading dairy state in the southeast, which is very needful because of the deterioration of milk production in most states across the southeast.

To summarize 2022, it's been a rewarding year with higher prices, newer programs, and intensive involvement with our producers. The staff and board are very grateful to our industry sponsors and especially the Kentucky AG Development Board, which provides a major portion of our funding and gives us great support. It is an honor to represent Kentucky dairy farm families and allied industries, and I look forward to a successful 2023.



Cont'd on pg. 6





13052 BOWLING GREEN RD.
AUBURN, KY 42206
P: (270) 542-4957



WWW.SHAKERJCB.COM



Working for Kentucky Dairy Farmers

- Mobile Dairy Classroom
- Education Materials for Schools

• Engagement at Fairs,
Community Events, and Festivals

• Partnerships: Special Olympics, Kentucky
Agriculture and Environment in the Classroom

• WKU and High School Athletic Programs
And Chocolate Milk Grant



KDDC
**Kentucky Dairy
Development Council**

*Working for you to provide
local dairy promotion in Kentucky.*



Start your calves out the right way.
Ask about our proven program
featuring Calf Command and
Success 1.



A good calf
program is key to a
healthy herd.

Cpcfeeds.com
888.618.6455

CPC Dairy Nutrition Team
Joe Sparrow | 270.670.4178
Dr. Megan Taylor | 270.427.0016

OWEN

TRANSPORT
SERVICES



Justin Owen
270-392-1909

Mike Owen
270-392-1908

Russellville, Kentucky



Visit www.selectsires.com for a complete listing or call your Select Sires representative to add Wellness specialists to your herd today!



YOUR SUCCESS *Our Passion.*
Select Sires MidAmerica, Inc. ♦ (502) 425-1868

Image©Farmgirl Photography™ WellnessPRO is a trademark of Select Sires Inc.



NUTRITIONAL SOLUTIONS

for modern dairy production

Alltech®
GUT HEALTH MANAGEMENT

Alltech®
MINERAL MANAGEMENT

Alltech®
FEED EFFICIENCY

BIO-MOS®2, INTEGRAL® A+,
SELECT BAC™

BIOPLEX®, SEL-PLEX®



AMAIZE®, FIBROZYME®
OPTIGEN®, YEA-SACC®

With the most researched products on the market, the Alltech On-Farm Support program and our team of elite dairy advisors are able to provide the best nutritional support and service to your herd.

**Alltech, your dairy
nutrition experts.**

Alltech®

Elizabeth Lunsford
elunsford@alltech.com | (859) 553-0072

Alltech.com  AlltechNaturally  @Alltech
©2018. Alltech, Inc. All Rights Reserved.

Cowherd Equipment & Rental Inc.



Penta 4030



Hagedorn 5290



Penta 6730



Scorpion 500



Roto-Mix



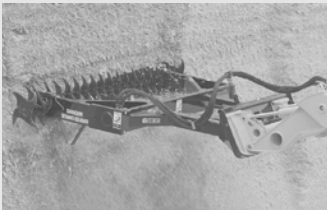
Tire Scraper



Nuhn 8" Pump



Meyer 2636 Crossfire



Silage Defacer



Triolet 1000



Dion Chopper



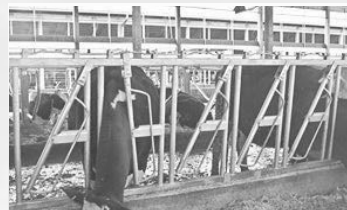
Dion F64 Head



Artsway 7165



Penta 6020 SD



J & D Headlocks



Herd Boss 4815



Jaylor 5575



Mandako Crop Roller

**Cowherd Equipment
& Rental, Inc.**

1483 Old Summersville Rd. • Campbellsville, KY 42718

Office 270-465-2679

Tony 270-469-0398 • Vince 270-469-5095

Givens-Houchin, Inc.

Our family owned business has been serving dairy farmers in central Kentucky for over 60+ years.



Grain Processing Corporation

Animal Feed Ingredients

Performance, Convenience, Flexibility

-Corn Gluten Feed

Wet, Loose, Pellets

-Corn Gluten Meal

Phone: (563) 264-4843

Fax (563) 264-4289

www.grainprocessing.com



**Changing lives
one meal at a time**

At Nutra Blend, we **DRIVE TO FEED**.
Helping to provide assistance to
communities across the country
through our Drive to Feed Kids program.

Nutra Blend
3200 East 2nd Street
Neosho, MO 64850
nutrablend.com



KVMA

KVMA Mission:

*To Promote, Improve, and Advocate
for the Veterinary Profession*

*Kentucky Veterinary Medical Association
108 Consumer Lane • Frankfort, KY 40601
502-226-5862*

*Debra Hamelback, Executive Director
info@kvma.org
www.kvma.org*



KENTUCKY DEPARTMENT OF AGRICULTURE



For more information contact KDA:
502-782-4122
www.kyagr.com

Photo taken at LeCows Dairy



Soybean Board

 www.kysoy.org

Funded by soybean checkoff dollars.

**ANIMAL AG IS THE KENTUCKY SOYBEAN
FARMER'S NUMBER ONE CUSTOMER,
AND THAT'S NO BULL! WE APPRECIATE
OUR KENTUCKY DAIRY FARM FAMILIES.**



BLUEGRASS DAIRY & FOOD

SPRAY DRIED SPECIALTY INGREDIENTS FOR THE FOOD INDUSTRY



**606 West Main Street
Springfield, KY 40069
Tel: +1.859.336.7643
Fax: +1.859.336.5218**

**1117 Cleveland Avenue
Glasgow, KY 42141
Tel: +1.270.651.2146
Fax: +1.270.651.8844**

mail@bluegrassdairy.com



DAIRY EXPRESS
SERVICES

IS NOW



KAED
SALES • INC

**WE ARE STILL OFFERING THE SAME
GREAT PRODUCTS WITH THE SAME STAFF!**

The way to dairy.™

www.lely.com 1-888-245-4684

© 2019, Lely North America, Inc., All Rights Reserved. 1394_0219_US



GEA

**We Proudly Salute
All Dairy Farmers
And Thank You
For Your
Continued
Support!**

KAED
SALES • INC

COLUMBIA, KY

270-384-9843

5 LOCATIONS FOR SALES & SERVICE

**Dairy Farmers of America is
proud to support the Kentucky
Dairy Development Council.**

Get to know us at dfamilk.com



THIS MARK MATTERS.



DFA

Dairy Farmers of America

Kesler Case | Kesanca Farms | Eminence, Ky.



Get More
Of This
←

Out Of
This →



Burkmann[®]
| N U T R I T I O N

*Science & Performance
That Make The Difference*



Moving agriculture forward, no matter which way the wind blows.

From farm fields to the legislative chambers of the state and nation, it takes leadership at all levels to meet the challenges of Kentucky's agricultural communities. Kentucky Farm Bureau will continue to support that leadership — as an advocate, a service provider and an organization — by giving leaders the tools, encouragement and voice they need to succeed in an ever-changing world. Why Farm Bureau? Because effective leadership makes life better for all Kentuckians.



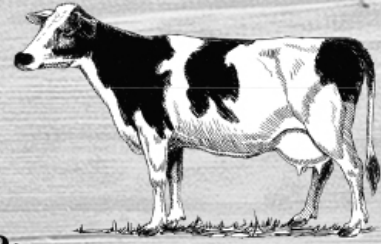
KENTUCKY FARM BUREAU

— EST. 1919 —

FARMER
OWNED

**Prairie
Farms®**

Dedicated Farmers



Happy Cows • Real Milk

We Are Kentucky's Dairy

Choose **100% REAL Milk**
And Accept No Substitutes

- NO Artificial Growth Hormones
- Locally Owned by Farm Families
- Committed to Animal Care
- Committed to Sustainability
- Committed to Freshness
- Committed to Quality Assurance
 - Strict Control – No Antibiotics*

*Ensures milk shipped to stores is free of antibiotics



Locally Owned • Locally Produced • Since 1938

PrairieFarms.com





Livestock Feed Pet Feed
Minerals Seed
Custom Mixes Seed Cleaning
And More!

Delivery Available!

270-475-9999

fax 270-475-9187

cluttrull@bellsouth.net

127 Hopson Street • Pembroke, Kentucky

Make *lasting* changes
that give you *lasting* savings.



DCC Waterbeds®

Dual Chamber Cow Waterbeds

Comfort. Built to last.



www.dccwaterbeds.com • (608) 709-2693

Lose the Clipboard - Grab your Tablet!



Come by our booth and see how PocketDairy with Vet Check Maxx can change the way you keep records on your dairy farm. All data for Herd Vet Check is right there on one screen. Then your Android tablet syncs back with PCDART on your farm computer. Maximize your time during vet checks and during daily chores!

MID-SOUTH
DAIRY RECORDS

1960 E Blaine St—STE 100
Springfield, MO 65803

417-831-6931
800-756-3442
www.mydhia.org



KENTUCKY AGRICULTURAL
DEVELOPMENT FUND



The Kentucky Agricultural Development Fund invests funds in innovative proposals that increase net farm income and affect tobacco farmers, tobacco-impacted communities, and agriculture across the state by stimulating markets for Kentucky agricultural products.



KENTUCKY
DEPARTMENT OF
AGRICULTURE
KENTUCKY OFFICE OF
AGRICULTURAL POLICY

**Kentucky Office of
Agricultural Policy**

404 Ann Street
Frankfort, KY 40601
502-564-4627
KOAP@ky.gov
kyagr.com/agpolicy



- Dairy Parlors and Equipment
- Hay Tools
- Feed Mixers
- Manure Spreaders
- Tractors
- ... and Much More

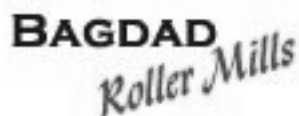
Zack Burris
Farm Equipment Sales
Cell: (270) 576-7001
zburris@agcentral.coop

300 Industrial Drive
Glasgow, KY 42141
Office: (270) 282-0476
www.agcentralcoop.net

AgriFeed International, LLC



www.agrifeed.com



Proud of our dairy
heritage and excited about our dairy future.

800-928-FEED

Bank of Jamestown

We are a locally-owned, community bank located in south central Kentucky on beautiful Lake Cumberland.

Chartered in 1899, our goal as a progressive bank is to provide outstanding customer service and prompt decision making from "Hometown" people.

www.bankofjamestown.com

Central Farmer's Supply of Green County

901 Columbia Hwy.
Greensburg, KY 42743

270-932-5101

Day & Day Feed Mill

Not just a feed store anymore

www.dayanddayfeed.com
Columbia, KY
1.270.384.2209

Hartland Animal Hospital

6425 South Jackson Hwy.
Horse Cave, KY 42749

270-786-5545
www.hartlandanimalhospital.com



www.kycorn.org
800-326-0906

PO Box 90 • Eastwood, KY 40018

Limestone&Cooper^{LLC}

Bowling Green, Kentucky

Comprehensive Nutrient Management Plans (CNMPs) •
livestock manure management • water quality BMPs •
Ky Division of Water permitting and compliance

Ben Koostra

Professional Engineer • NRCS Technical Service Provider
859-559-4662 • benkoostra@limestonecooper.com

Mammoth Cave

592 Oakland-Flatrock Rd.
Oakland, KY 42159

270-563-2131



www.qualitru.com

Smith Creek, Inc.

Industry Experts In:

Mulch • Compost • Animal Bedding
Fuels • Fuel Pellets • Renewable Energy

Jeff Roll • Product Manager

8991 Louis Smith Road • Borden, Indiana 47106

Office: (812) 903-4038

Mobile: (812) 431-1579

jroll@koettersmith.com

www.koettersmith.com

Wilson Trucking

Alan Wilson
Somerset, KY

606-875-7281

**SOUTH
CENTRAL
BANK**



South Central Bank offers innovative
banking solutions to all customers.

- ATMs
- Debit Cards
- Check Reorder
- Locations
- Mobile App

www.southcentralbank.com

**KDDC would like to
thank all of our sponsors
for your help and support
over the past year!**



Non-Profit
US Postage
PAID

176 Pasadena Drive
Lexington, KY 40503
859.516.1129 ph
www.kydairy.org

Calendar of Events

FEB 21 Legislative Breakfast, Capital Annex 7:30am

FEB 28 Kentucky Dairy Partners Conference & Trade Show & Kentucky Dairy Awards Banquet, Sloan Convention Center

MAR 1 Kentucky Dairy Partners Conference & Trade Show, Sloan Convention Center

MAR 23 KDDC Board Meeting, Washington Co. Extension Office

APR 7 Kentucky National Show & Sales, Exposition Center Louisville

MAY 25 KDDC Board Meeting, Adair County Extension Office

JUN 23-27 Holstein National Convention Lexington

JUL 20 KDDC Board Meeting - TBA

AUG 17-20 Kentucky State Fair Dairy Shows

AUG 18 Youth Cheese Auction, Kentucky State Fair

OCT 2-6 World Dairy Expo

NOV 16 KDDC Board Meeting, Taylor County Extension Office
